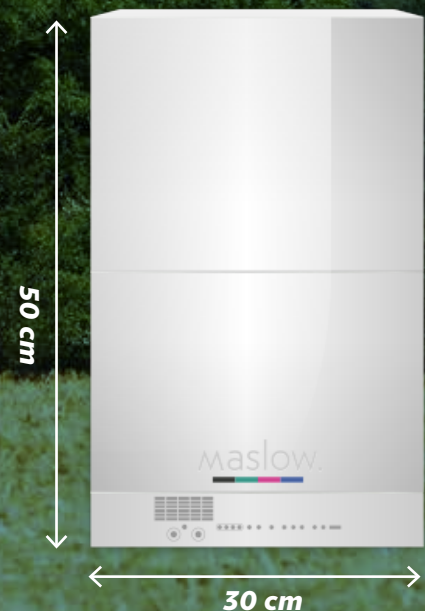


maslow stores the energy from your solar panel

maslow is the ideal solution for improving use of self-generated power. maslow batteries store spare solar energy or charge at night, to enable you to use energy when you want to. maslow is compact and smart, helping to manage your energy needs.



solar self-consumption. generate energy during the day... use it at night



Why buy back your own solar energy in the evening at higher price. Storing what your house doesn't use during the day, helps reduce energy use in the evening and avoid future peak energy charges. maslow can also take advantage of new smart tariffs and buy energy at off-peak or low carbon times.

powers the things you need everyday

maslow efficiently powers critical digital devices, computers and media. Provides energy and keeps you online during a power cut. Our new high power USB sockets power direct current (DC) devices without the need for wasteful mains adaptors. This keeps energy costs low and ensures you will never be without power for your critical devices.

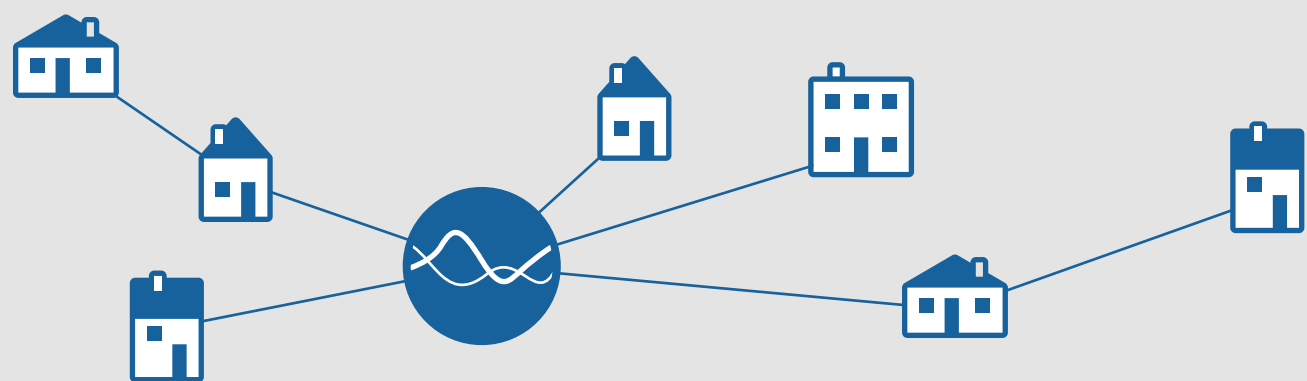


independence.

maslow can directly power LED lighting circuits, helping to reduce electricity and maintenance costs. maslow also offers a way for urban homes to take the first steps towards using solar to power home offices and LED lighting.



our maslow aggregation platform can share storage to communities and networks, providing access to emerging income streams



unique selling points/differentiators.

Compact and wall mounted - compact 2-3KWh modules, 50cm x 30cm x 20cm, expandable up to 5KWh or 12KWh

Retrofit and rapid install - easy retrofit to most existing residential PV installs, without need to replace inverter, or as part of new solar install. 1-3 hours.

Solar self-consumption - deep cycle LiFePO4 batteries store excess solar energy, and convert back to AC mains

Economy 7 and smart tariffs - smart plans enable linking to lower rate night or on demand tariffs, or network signals

Aggregate service income - maslow shares storage providing access to recurring income from new demand services.

Smart interfaces - web based interfaces allow control and dashboards to be viewed through browsers

No power power outages - maslow can provide power during an outage to connected DC LED lighting and appliances via new USB Power Delivery sockets.

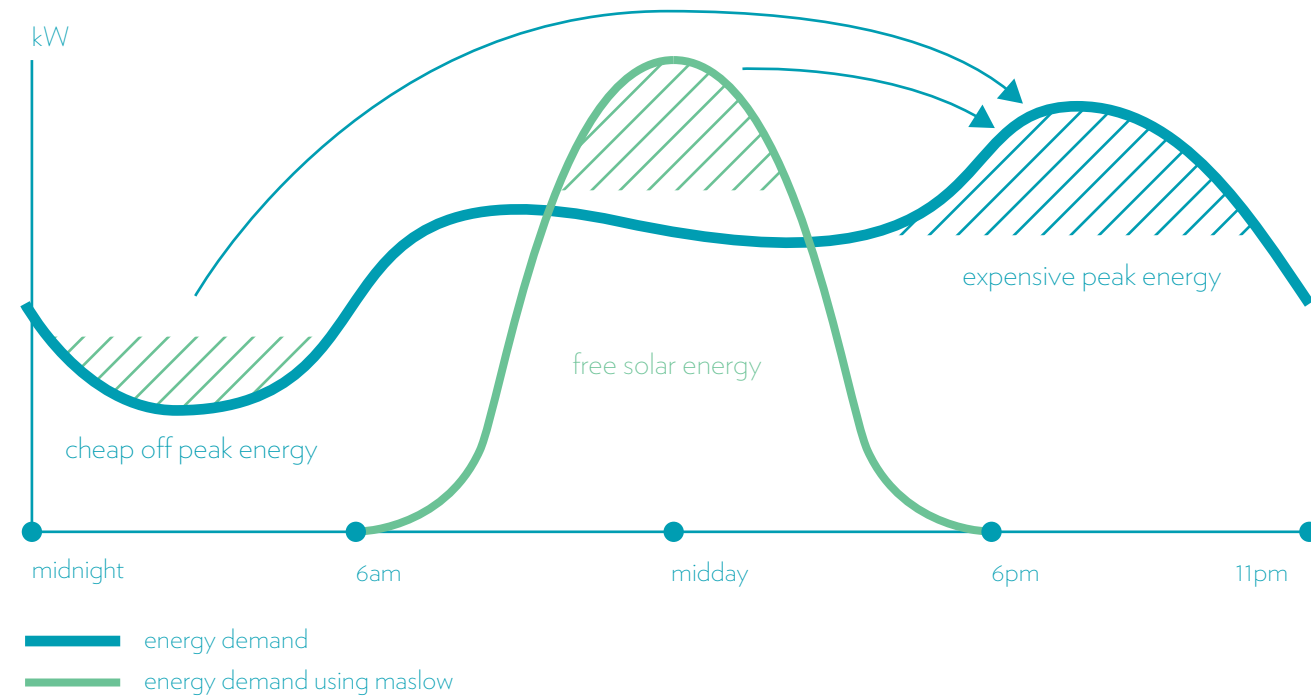
Urban solar & DC microgrids - maslow can be installed in urban environments with direct PV panels.

Mitigate energy inflation - maslow helps reduce base and peak energy use, protecting against rising energy price

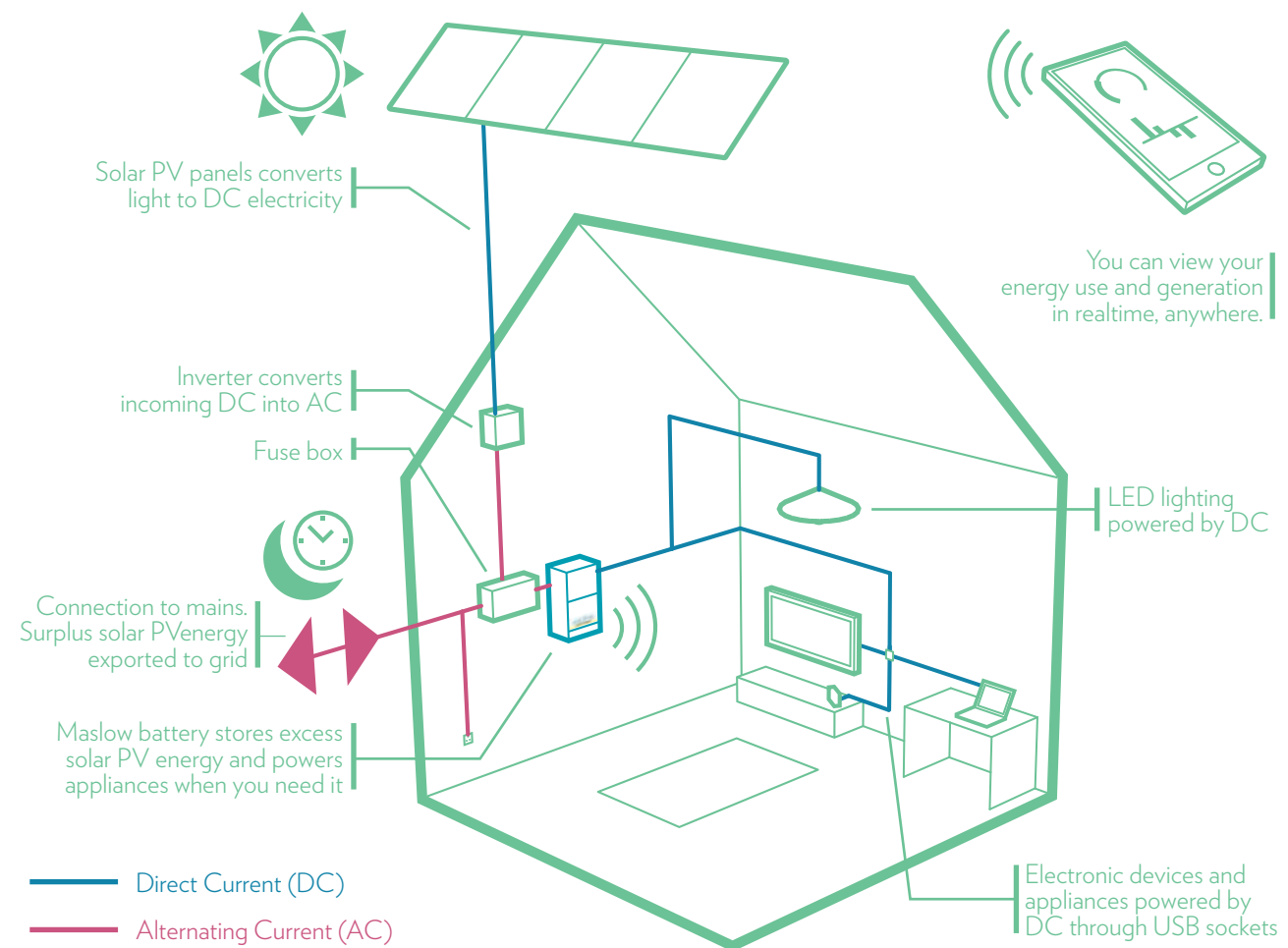
Patented & proprietary - covered by granted patents on battery and DC power systems.



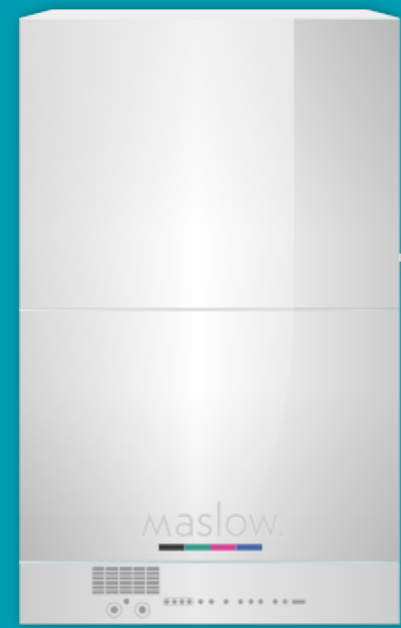
how it works.



Your maslow stores energy from cheap off peak & free solar sources & converts it back to mains power to reduce your peak energy use.



power resilience.



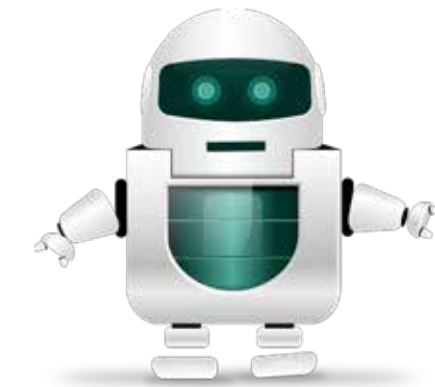
and lights your home with energy efficient LED lighting

maslow can directly power LED lighting circuits, helping to reduce electricity and maintenance costs. maslow also offers a way for urban homes to take the first steps towards using solar to power home offices and LED lighting.



maslow.

maslow.

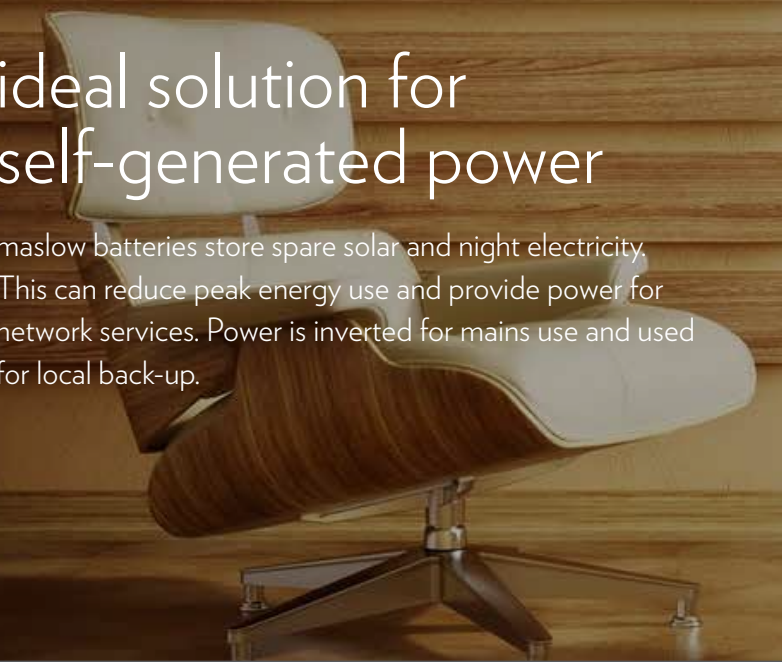
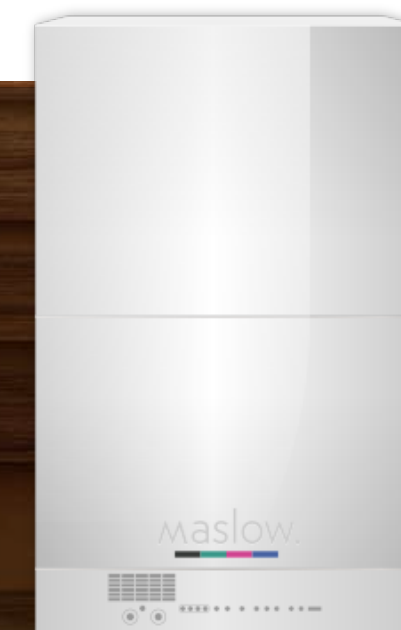


meet maslow.

smart energy storage for homes and offices.

ideal solution for self-generated power

maslow batteries store spare solar and night electricity. This can reduce peak energy use and provide power for network services. Power is inverted for mains use and used for local back-up.



2kWh maslow datasheet: sku: MASMCU0112

maslow integrated smart battery and power delivery system



2 kWh maslow. Sized for an average 3 bedroom house.



Battery 2 kWh LiFePO4 battery unit

Dimensions Height: 49.0 cm
Width: 30.8 cm
Depth: 15.0 cm (19.0 cm with optional inverter layer)
Weight: 28.6 kg (inc. 2x 1kWh battery)

Power Inputs Mains AC . Fused input (3A) between 85 - 263V AC / 120 - 373V DC.
PV panel inputs, standard MC4 PV connections, up to 15A, max VOC 35V rated panel

Power Output 3 x DC outputs, 23-32V combined maximum 14A load
1 x internal connector to micro-inverter, rated at 17A DC
1 x AC output (micro-inverter version), rated at Max 430W

Battery 2x non-user replaceable battery 40Ah module. Typical life > 1500 full charge cycles @ <80% DOD (5 - 10 years under service / warranty agreements) Batteries are rated at max 20A charge / discharge rate. Fully charged 28.8V, discharge to 23V

Protection & Compliance All connections between power sources are protected with logic controlled fault detection circuitry that disconnects all power when activated. Protection is for over current (>17A), over voltage (>36V), and under voltage (<20V) conditions. Earth fault protection is provided through comparator analysis in software, disconnects all power outputs when activated. All DC outputs are additionally protected with thermal fuses, typically rated at 8A, but matched on install to network load. Designed to comply with FCC/EMC, ROHS (EN301-489-1 & -17), FCC (part 15B) and Canada (ICES003), EN 60950-1 (tested by UL and others). Microinverter to G83/2. CE marked and fully compliant for sale in the EU.

Status Panel



Communications As standard with WiFi (external antenna).
Zigbee comms support for additional system components
Optional GPRS / 3G dongle enabled for cloud comms if no suitable WiFi / Ethernet available
Ethernet port (internal)

Notices Available for pre-orders UK FOB
2 Year Warranty (under terms & conditions): Extended warranty and battery replacement/upgrade service available.
Specifications subject to change without notice.
Patented and patents pending including (GB2476213, US201000076615, GB1221819.4)

more information?

For more information please call us on 020 7734 1511

email info@meetmaslow.com or go to www.meetmaslow.com

Moixa Technology Ltd 110 Gloucester Avenue London NW1 8HX



4-6kWh maslow datasheet: sku: MASMCU0224

maslow integrated smart battery and power delivery system

Moixa's NEW larger Maslow battery unit is designed for the modern office environment, powering DC lighting and laptops efficiently and reliably even if there is a power cut. Maslow maximises the amount of solar power you can use, lowering your business' bills

The system is designed for simple installation and can be stacked to expand the capacity with ease



4-6 kWh maslow. Scalable for a growing business



Battery	4-6 kWh LiFePO4 battery unit
Dimensions	Height: 70 cm (with TWO units the stacked height is 133 cm) Width: 90 cm Depth: 33 cm Weight: 90 kg (inc. 4x 1kWh battery)
Power Inputs	Mains AC . Fused input (10A) between 85 - 263V AC / 120 - 373V DC. 2 x PV panel inputs, standard MC4 PV connections, up to 30A, max VOC 35V rated panel
Power Output	3 x Hard-wired DC outputs, 23-32V / 2 x Pluggable DC output (Max 250) / 1 x Pluggable AC output (max rating 300W) WARNING combined maximum output for the six outputs above is 800W. Combined load must not exceed this value 1 x Hard-wired inverter AC output rated at Max 860W
Battery	4x non-user replaceable battery 40Ah or 60Ah module. Typical life > 1500 full charge cycles @ <80% DOD (5 - 10 years under service / warranty agreements) Batteries are rated at max 20A charge / discharge rate. Fully charged 28.8V, discharge to 23V
Protection & Compliance	All connections between power sources are protected with logic controlled fault detection circuitry that disconnects all power when activated. Protection is for over current (>17A), over voltage (>36V), and under voltage (<20V) conditions Earth fault protection is provided through comparator analysis in software, disconnects all power outputs when activated. All DC outputs are additionally protected with thermal fuses, typically rated at 8A, but matched on install to network load. Designed to comply with FCC/EMC, ROHS (EN301-489-1 & -17), FCC (part 15B) and Canada (ICES003), EN 60950-1 (tested by UL and others). Microinverter to G83/2. CE marked and fully compliant for sale in the EU
Communications	As standard with WiFi (external antenna). Zigbee comms support for additional system components Optional GPRS / 3G dongle enabled for cloud comms if no suitable WiFi / Ethernet available 2 x Ethernet port (external)
Notices	Available for pre-orders UK FOB 2 Year Warranty (under terms & conditions): Extended warranty and battery replacement/upgrade service available. Specifications subject to change without notice Patented and patents pending including (GB2476213, US201000076615, GB12218194)

more information?

For more information please call us on 020 7734 1511

email info@meetmaslow.com or go to www.meetmaslow.com

Moixa Technology Ltd 110 Gloucester Avenue London NW1 8HX

